



THE NEW REGAL HARDWARE HERITAGE DOOR HANDLE IS HERE!

Now you can carry Regal's exquisite character styling through from your windows to your doors too. Choose from 9 beautiful, hard-wearing finishes.

PVD Gold



Antique Bronze



Brushed Copper



Black



Satin Chrome



Polished Chrome



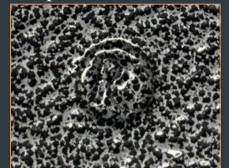
Rose Gold



Pewter Patina



Graphite



*Exclusively
available from*



T 01234 242724
E sales@windowware.co.uk
W windowware.co.uk



MARK OF DISTINCTION

Regal[®] Hardware

NEW REGAL HARDWARE HERITAGE DOOR HANDLE

This heritage style door handle continues the distinctive period looks synonymous with the Regal Hardware range to offer fabricators a complete suite of hardware that lets them carry the same beautiful character styling through from their windows to their doors for a truly authentic and fully integrated finish. With its tactile monkey tail or pear drop design and exquisite choice of 9 finishes, this handle is sure to draw admiring glances from even your most discerning customers.

Key Features:

- Traditional style door handle in monkey tail and pear drop design
- Extensive choice of 9 beautiful finishes
- Supplied with screws and spindles to accommodate door thickness between 70mm & 75mm
- Additional screw & spindle pack available with cut sizes to suit door thicknesses 44mm, 62mm & 90mm
- Sprung lever
- Accepts standard euro cylinder
- Suitable for PVC-u, aluminium, composite and timber doors
- Will meet the requirements of PAS 24 when fitted as part of a compliant door set

Specifications:

- 10-year mechanical guarantee on all hardware
- Cycle tested to 50,000 cycles
- **Satin chrome, polished chrome, graphite, black, pewter patina, PVD gold and antique bronze product guarantees:**
 - Corrosion tested to BS EN 1670 Grade 5
 - Salt spray tested for 480 hours
- **Brushed copper product guarantees:**
 - Corrosion tested to BS EN 1670 Grade 4
 - Salt spray tested for 240 hours
- **Rose gold product guarantees:**
 - Corrosion tested to BS EN 1670 Grade 3
 - Salt spray tested for 96 hours

Dimensions:

- Backplate size: 32mm x 240mm
- Screw centres: 211mm

Monkey tail door handles



Pear drop door handles

